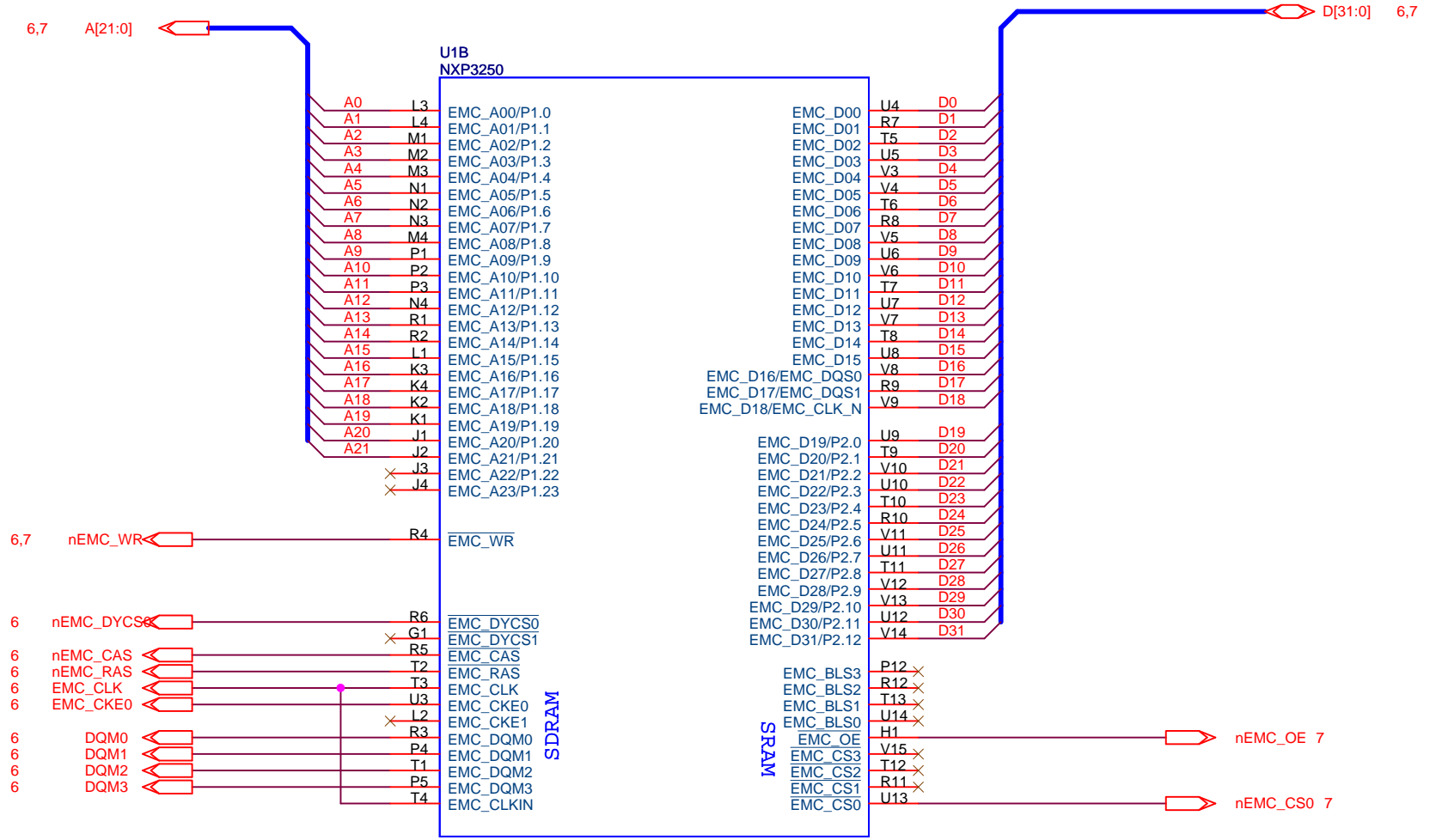


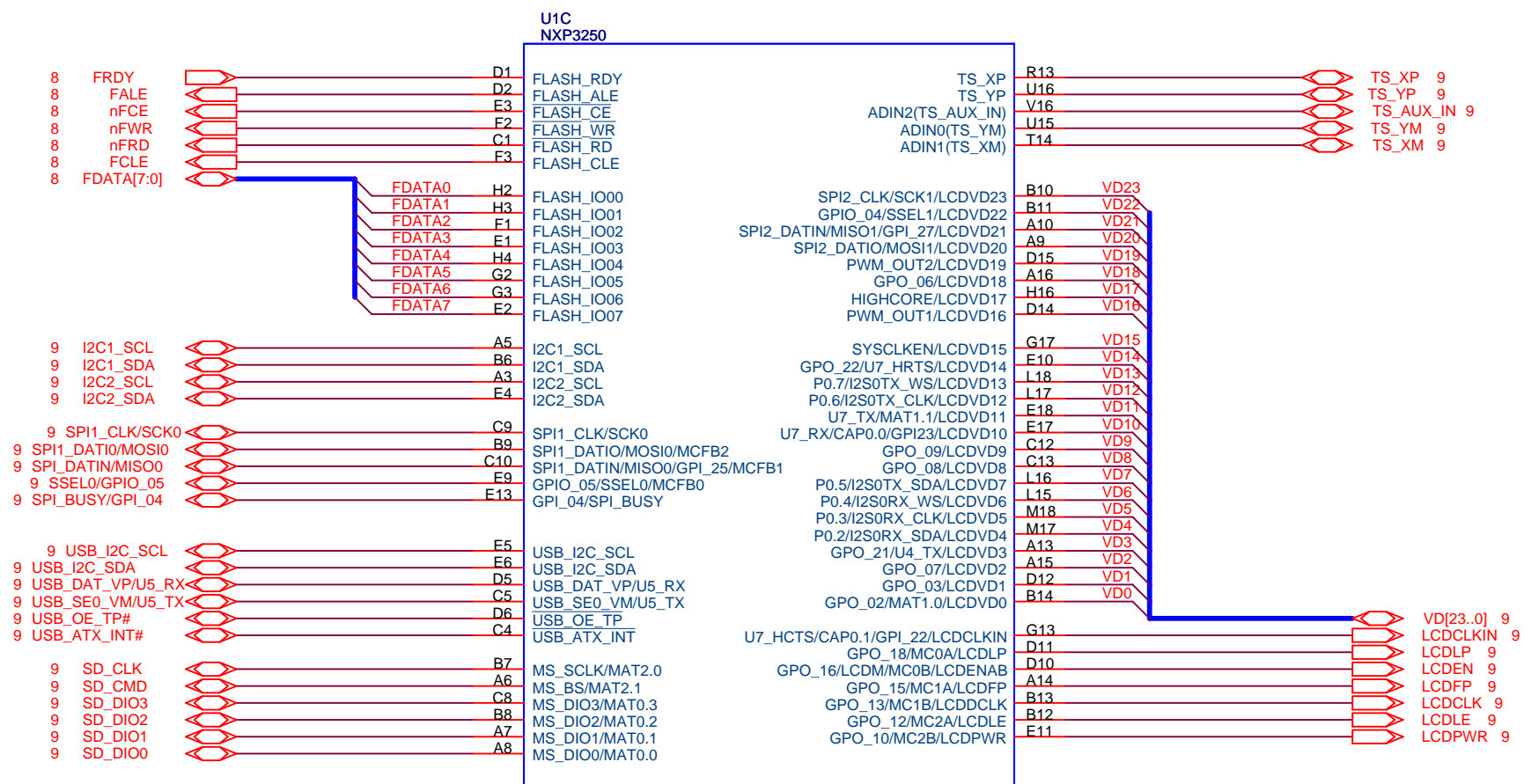
此部份电路尽可能靠近IC pin R14放置



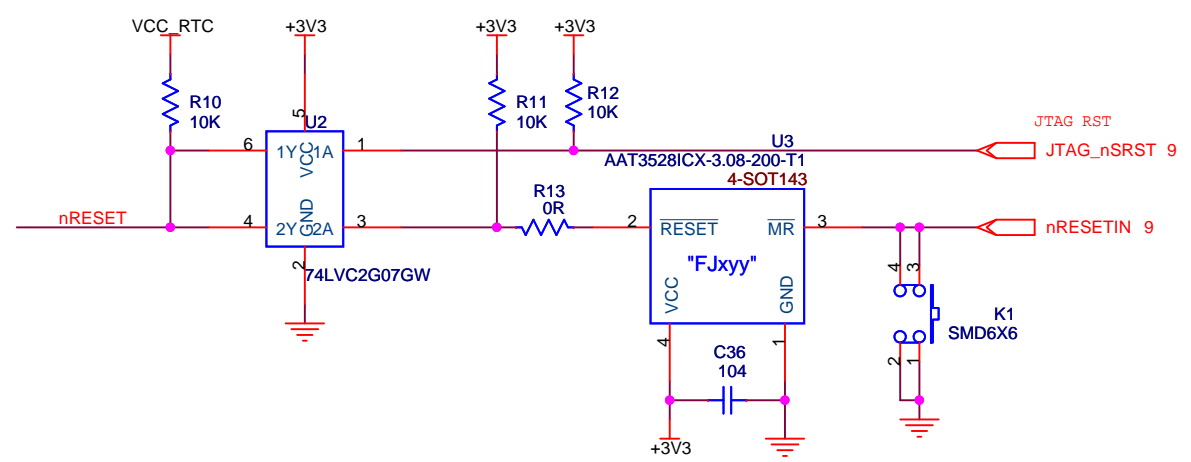
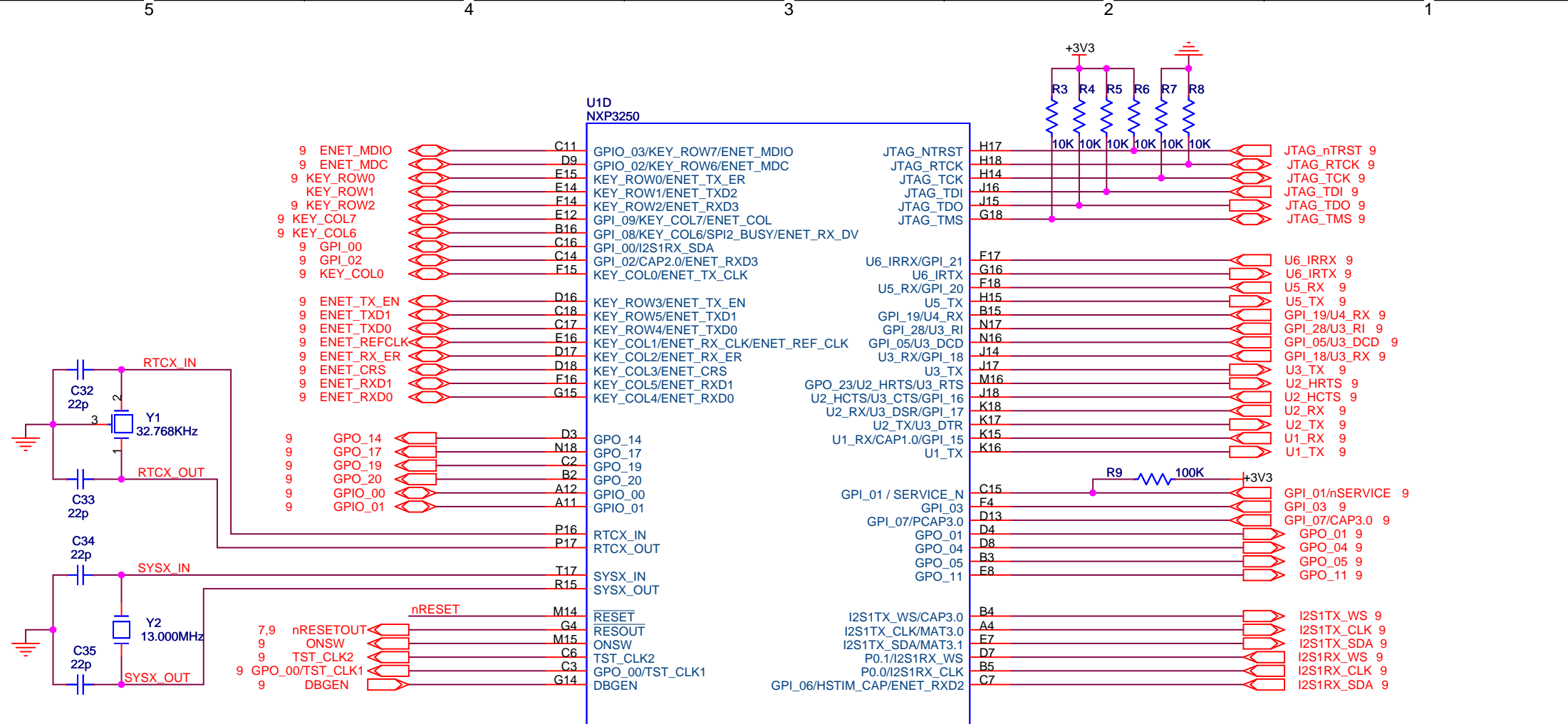
Title <LPC3250 EVB_sys>		
Size A4	Document Number <Doc>	Rev <1.0>
Date:	Tuesday, April 27, 2010	Sheet 1 of 9



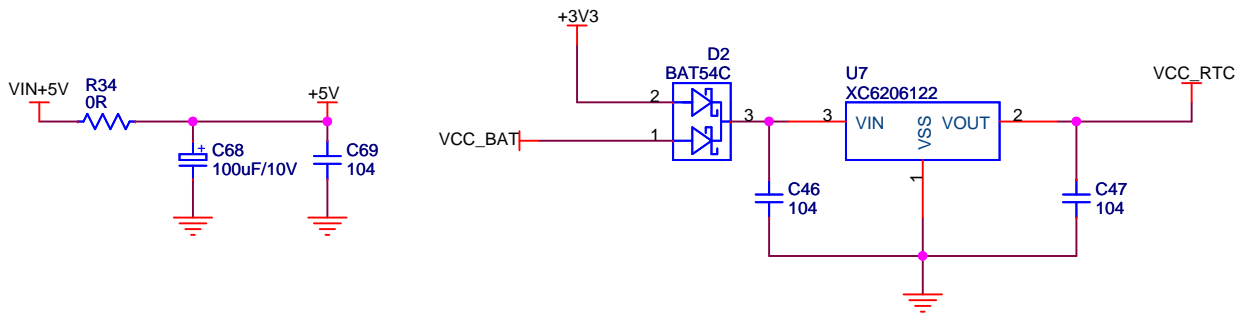
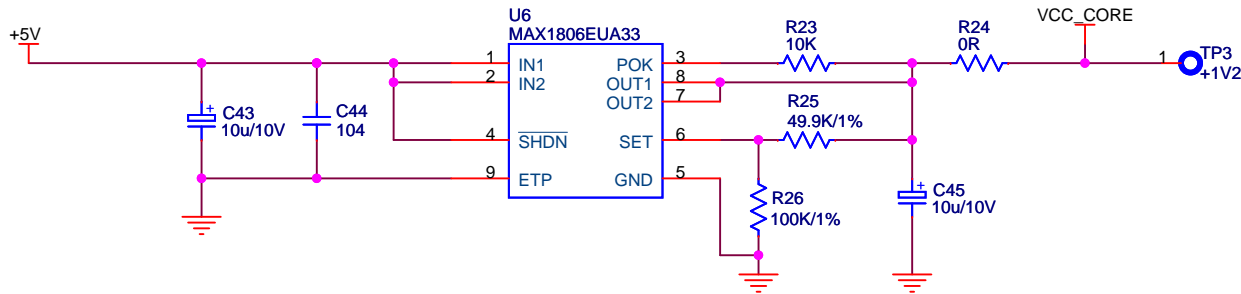
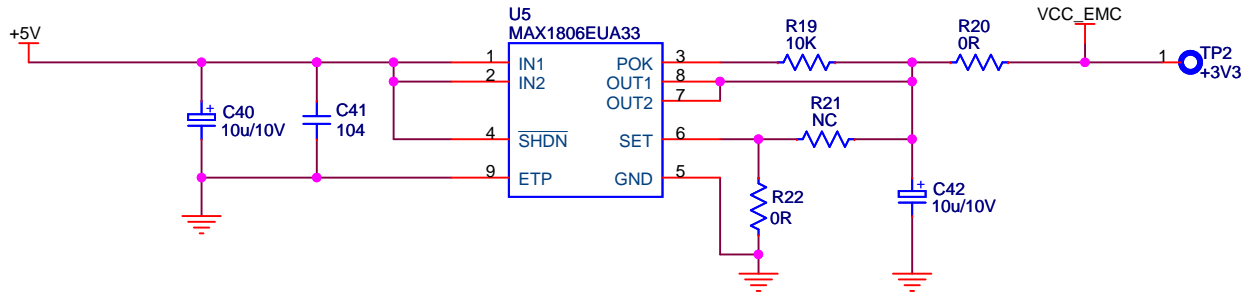
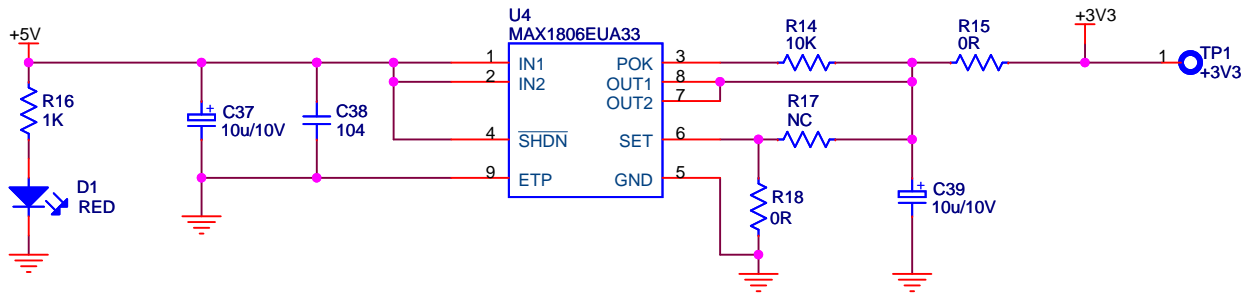
Title <LPC3250 EVB_sys>		
Size A4	Document Number <Doc>	Rev <1.0>
Date:	Tuesday, April 27, 2010	Sheet 2 of 9



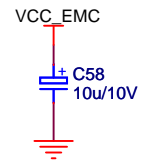
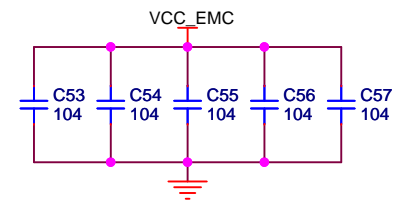
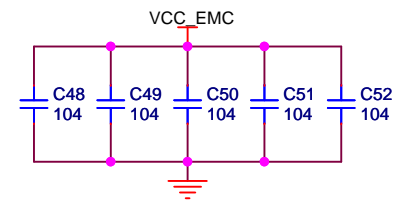
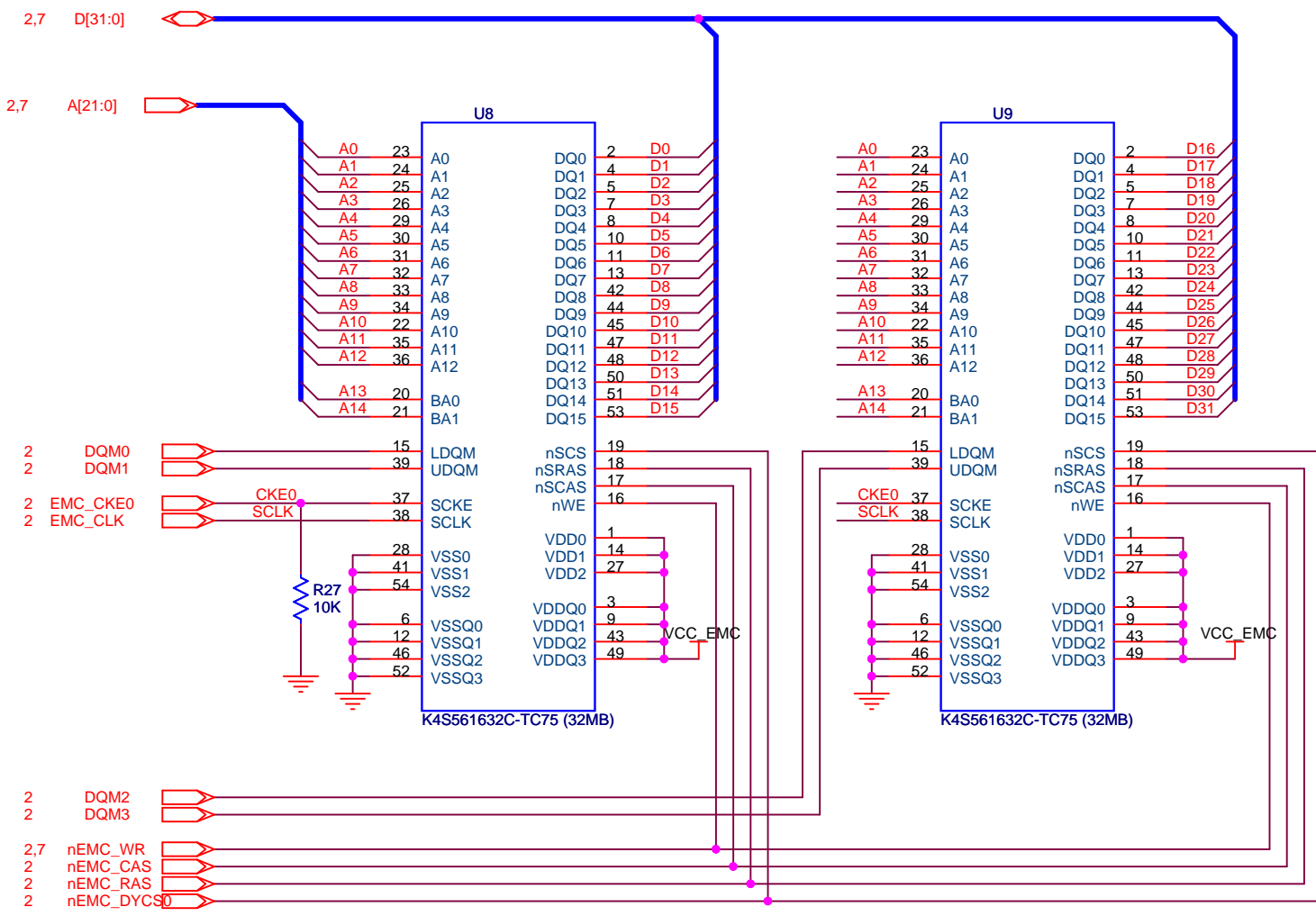
Title		
<LPC3250 EVB_sys>		
Size	Document Number	Rev
A4	<Doc>	<1.0>
Date:	Tuesday, April 27, 2010	Sheet 3 of 9



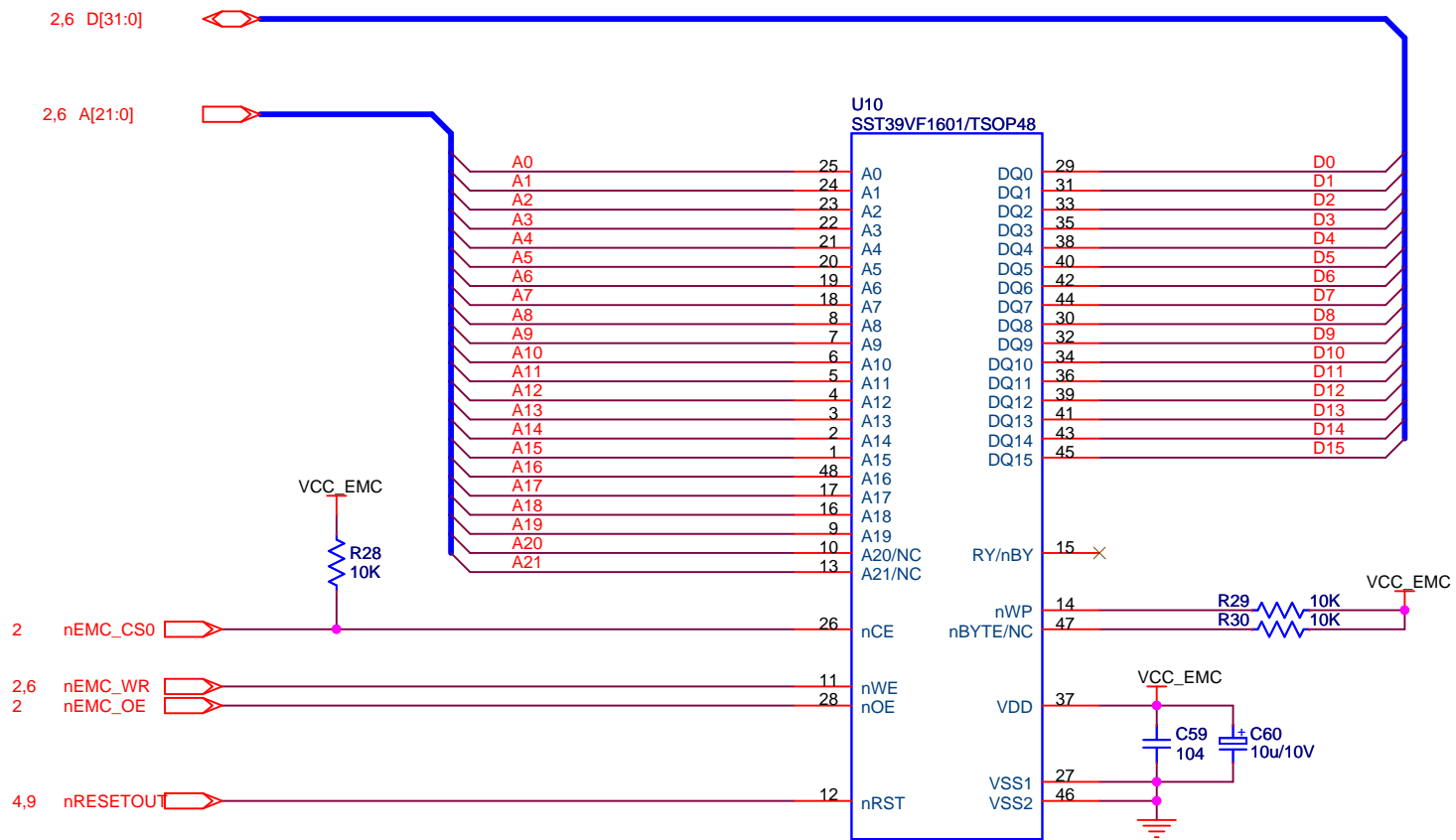
Title <LPC3250 EVB_sys>		
Size A4	Document Number <Doc>	Rev <1.0>
Date:	Tuesday, April 27, 2010	Sheet 4 of 9



Title <LPC3250 EVB_sys>		
Size A4	Document Number <Doc>	Rev <1.0>
Date:	Tuesday, April 27, 2010	Sheet 5 of 9



Title		
<LPC3250 EVB_sys>		
Size	Document Number	Rev
A4	<Doc>	<1.0>
Date:	Tuesday, April 27, 2010	Sheet 6 of 9



2,6 D[31:0]

2,6 A[21:0]

VCC_EMC

R28
10K

2 nEMC_CS0

2,6 nEMC_WR
2 nEMC_OE

4,9 nRESETOUT

U10
SST39VF1601/TSOP48

- A0 25
- A1 24
- A2 23
- A3 22
- A4 21
- A5 20
- A6 19
- A7 18
- A8 8
- A9 7
- A10 6
- A11 5
- A12 4
- A13 3
- A14 2
- A15 1
- A16 48
- A17 17
- A18 16
- A19 9
- A20 10
- A21 13

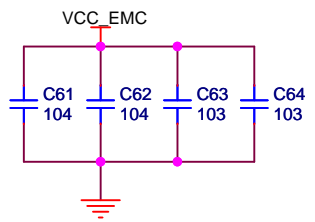
- DQ0 29
- DQ1 31
- DQ2 33
- DQ3 35
- DQ4 38
- DQ5 40
- DQ6 42
- DQ7 44
- DQ8 30
- DQ9 32
- DQ10 34
- DQ11 36
- DQ12 39
- DQ13 41
- DQ14 43
- DQ15 45

VCC_EMC

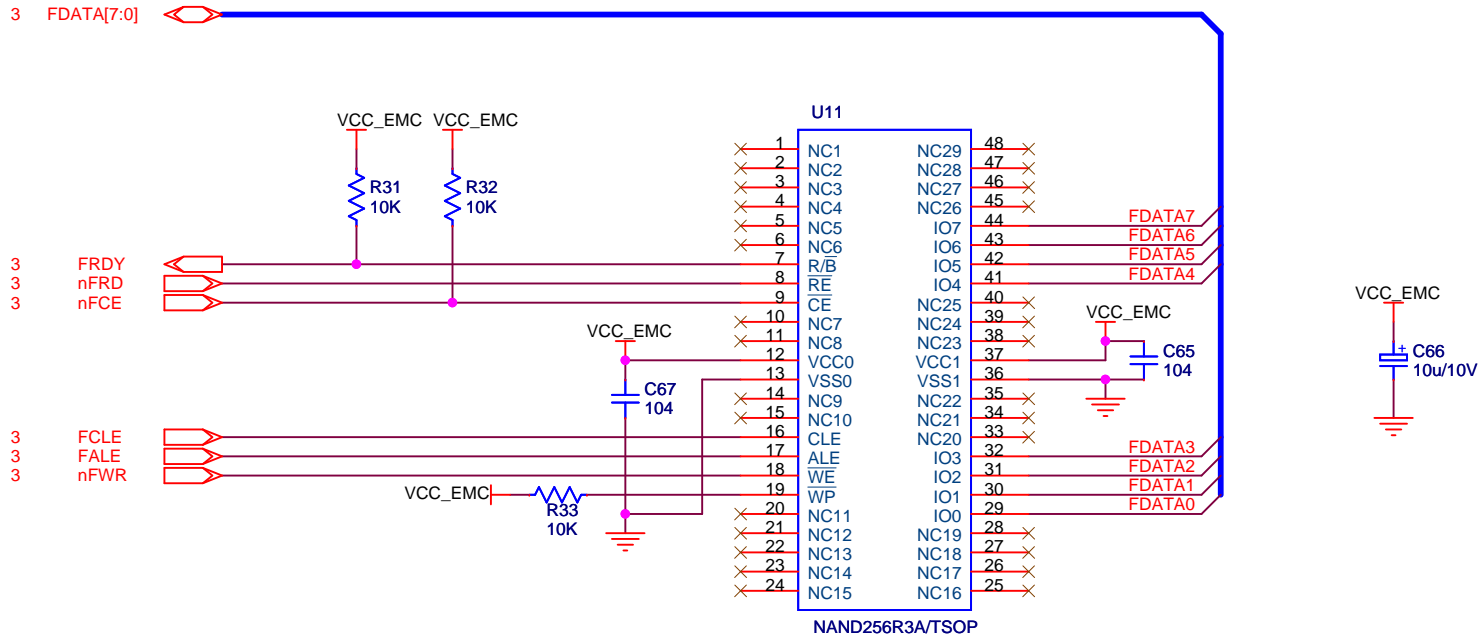
VCC_EMC

C59
104

C60
10u/10V



Title <LPC3250 EVB_sys>		
Size A4	Document Number <Doc>	Rev <1.0>
Date: Tuesday, April 27, 2010	Sheet 7	of 9



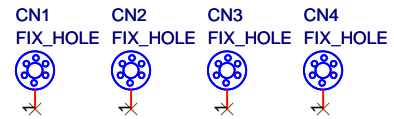
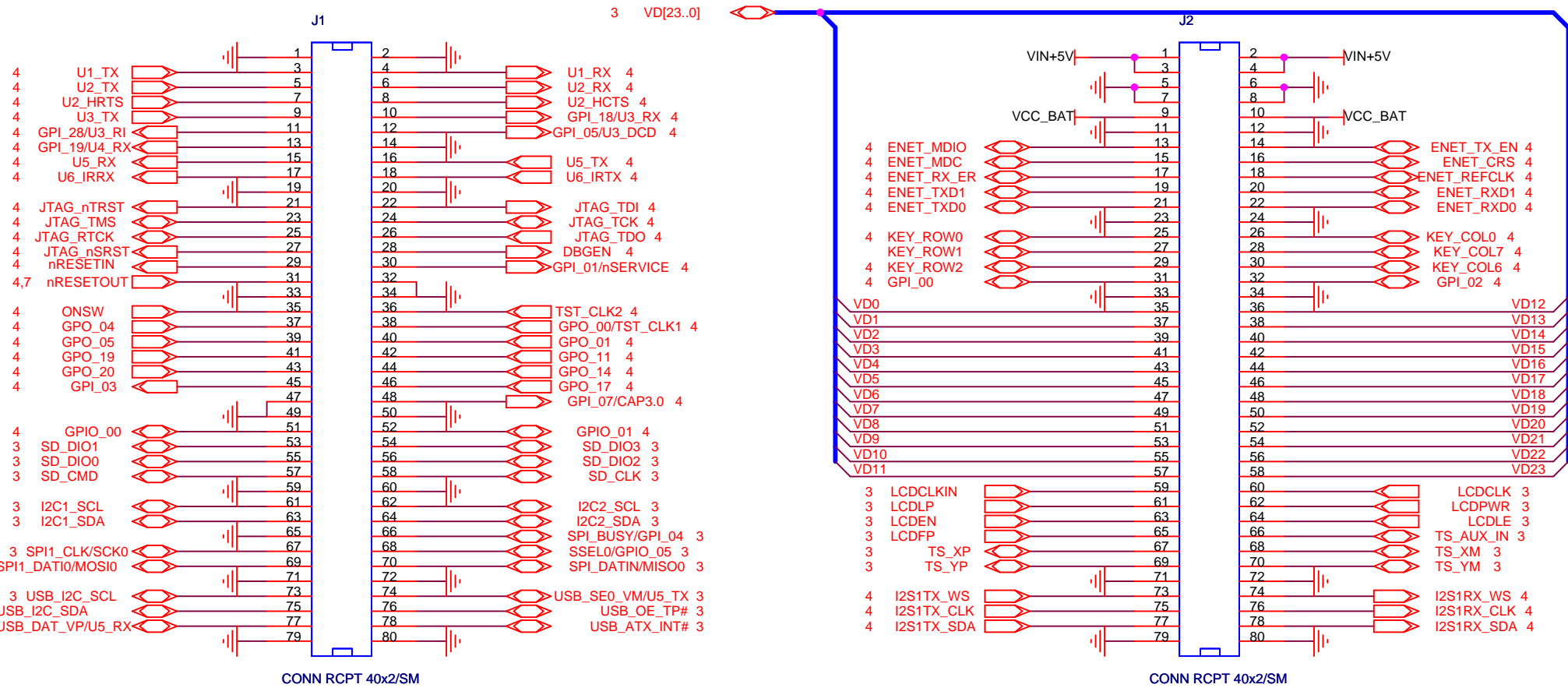
Title		
<LPC3250 EVB_sys>		
Size	Document Number	Rev
A4	<Doc>	<1.0>
Date:	Tuesday, April 27, 2010	Sheet 8 of 9

D

C

B

A



Title <LPC3250 EVB_sys>		
Size A4	Document Number <Doc>	Rev <1.0>
Date:	Tuesday, April 27, 2010	Sheet 9 of 9