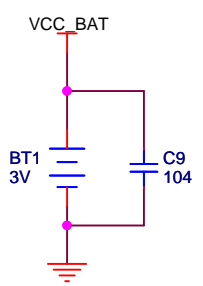
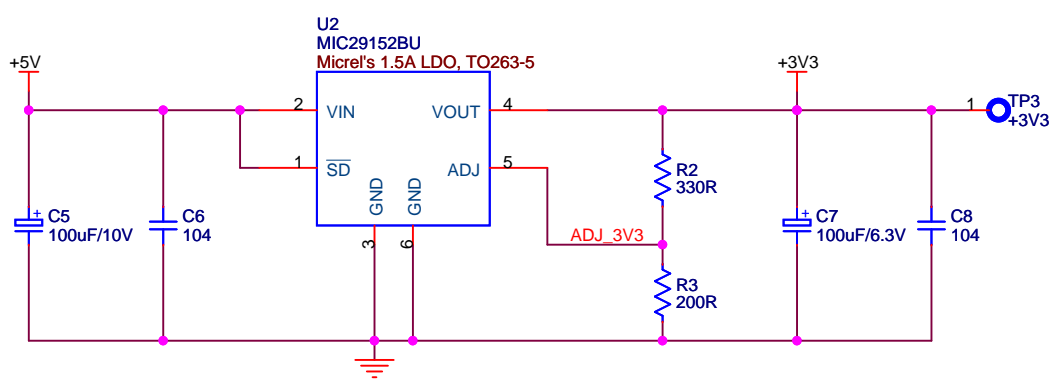
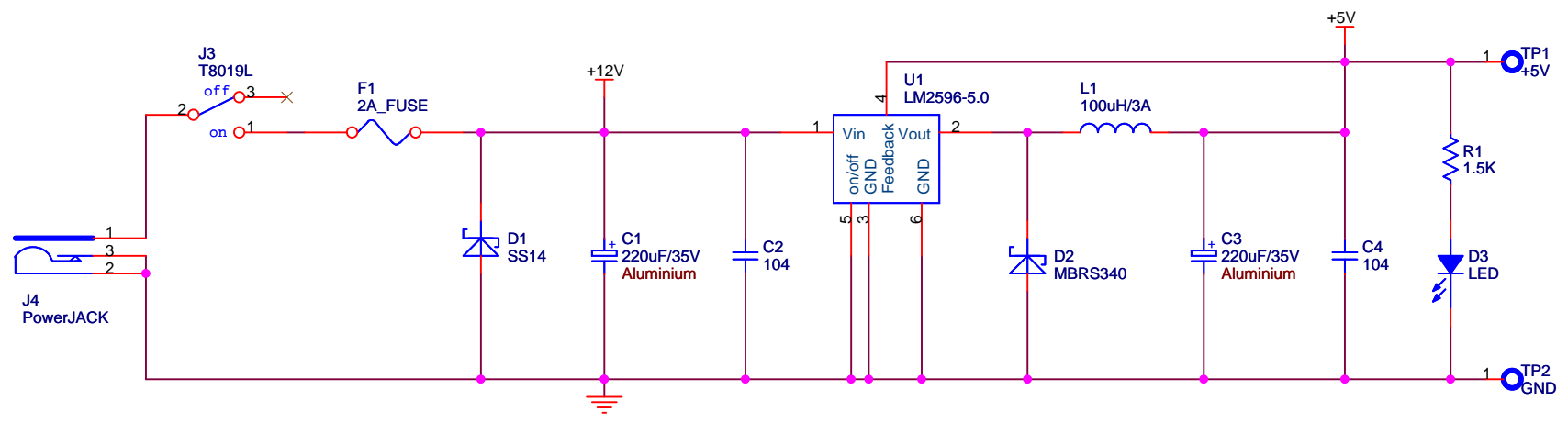
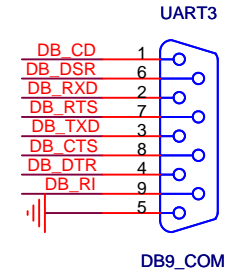
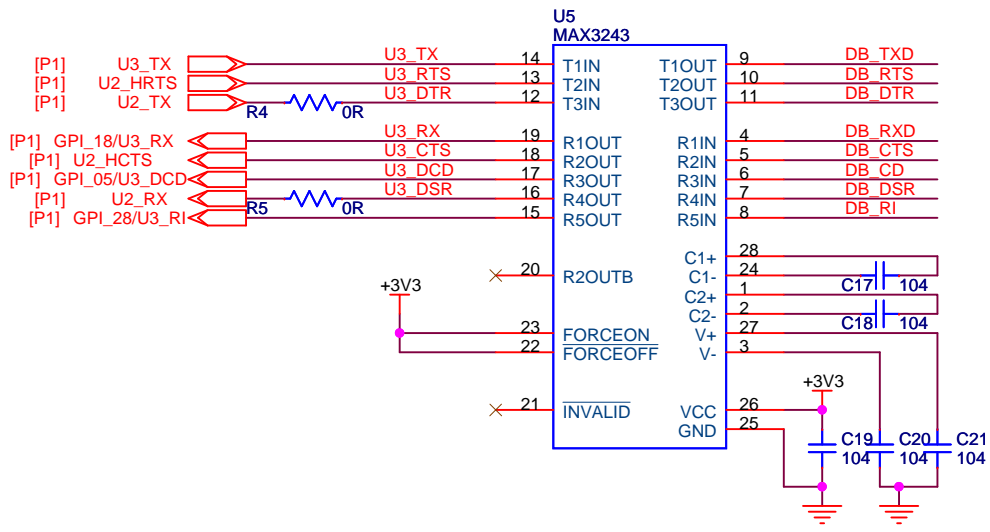
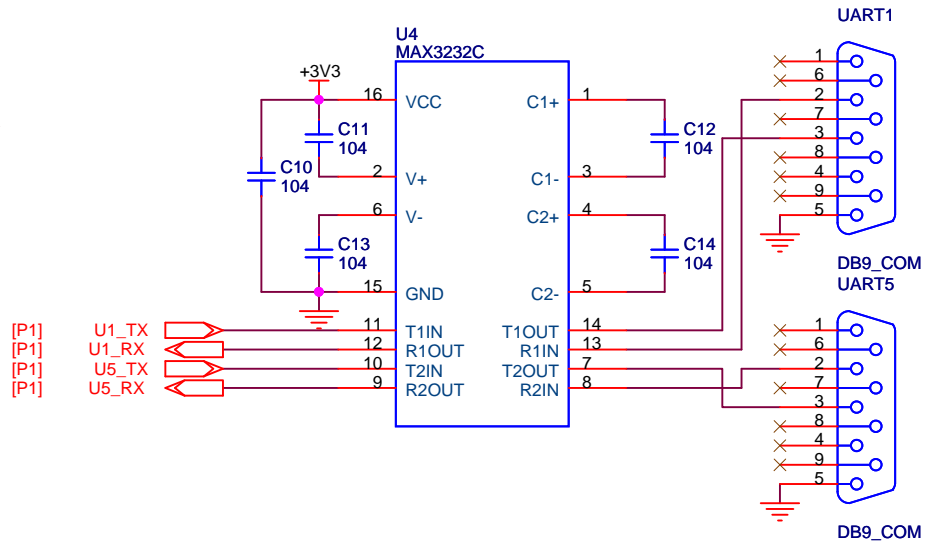
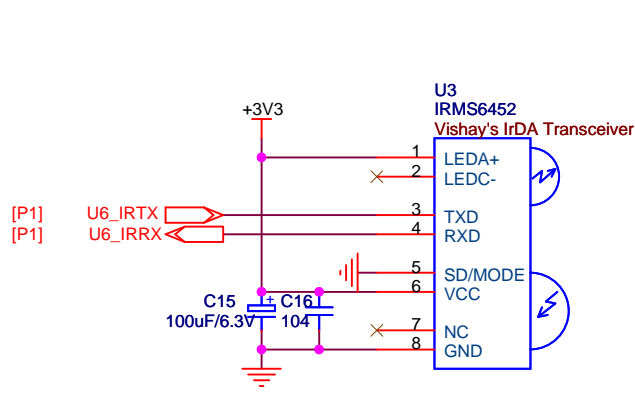


Title		
<LCP3250 EVB_dev>		
Size	Document Number	Rev
A4	<Doc>	<1.0>
Date:	Tuesday, April 27, 2010	Sheet 1 of 9



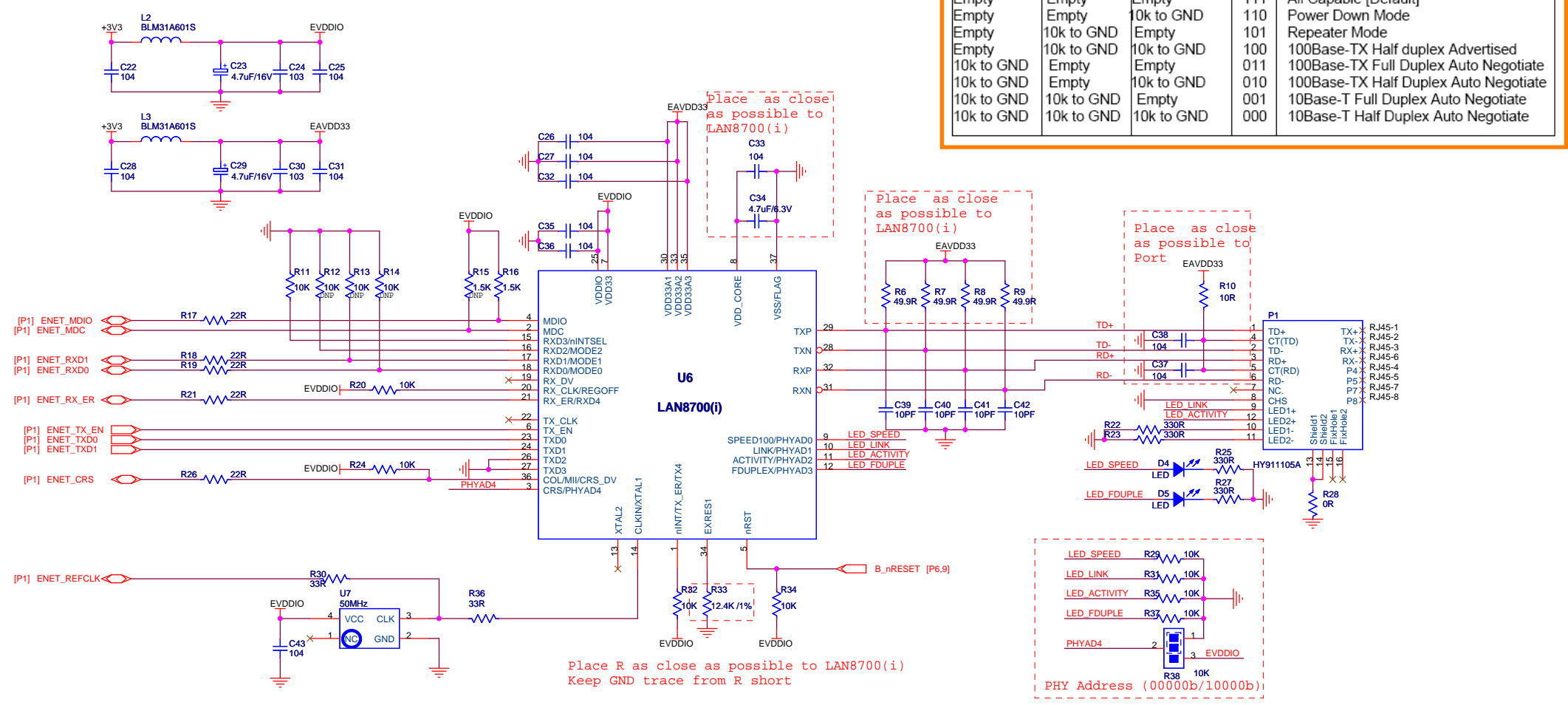
Title <LCP3250 EVB_dev>		
Size A4	Document Number <Doc>	Rev <1.0>
Date: Tuesday, April 27, 2010	Sheet 2	of 9



Title <LCP3250 EVB_dev>		
Size A4	Document Number <Doc>	Rev <1.0>
Date:	Tuesday, April 27, 2010	Sheet 3 of 9

PHY Modes (Default '111')

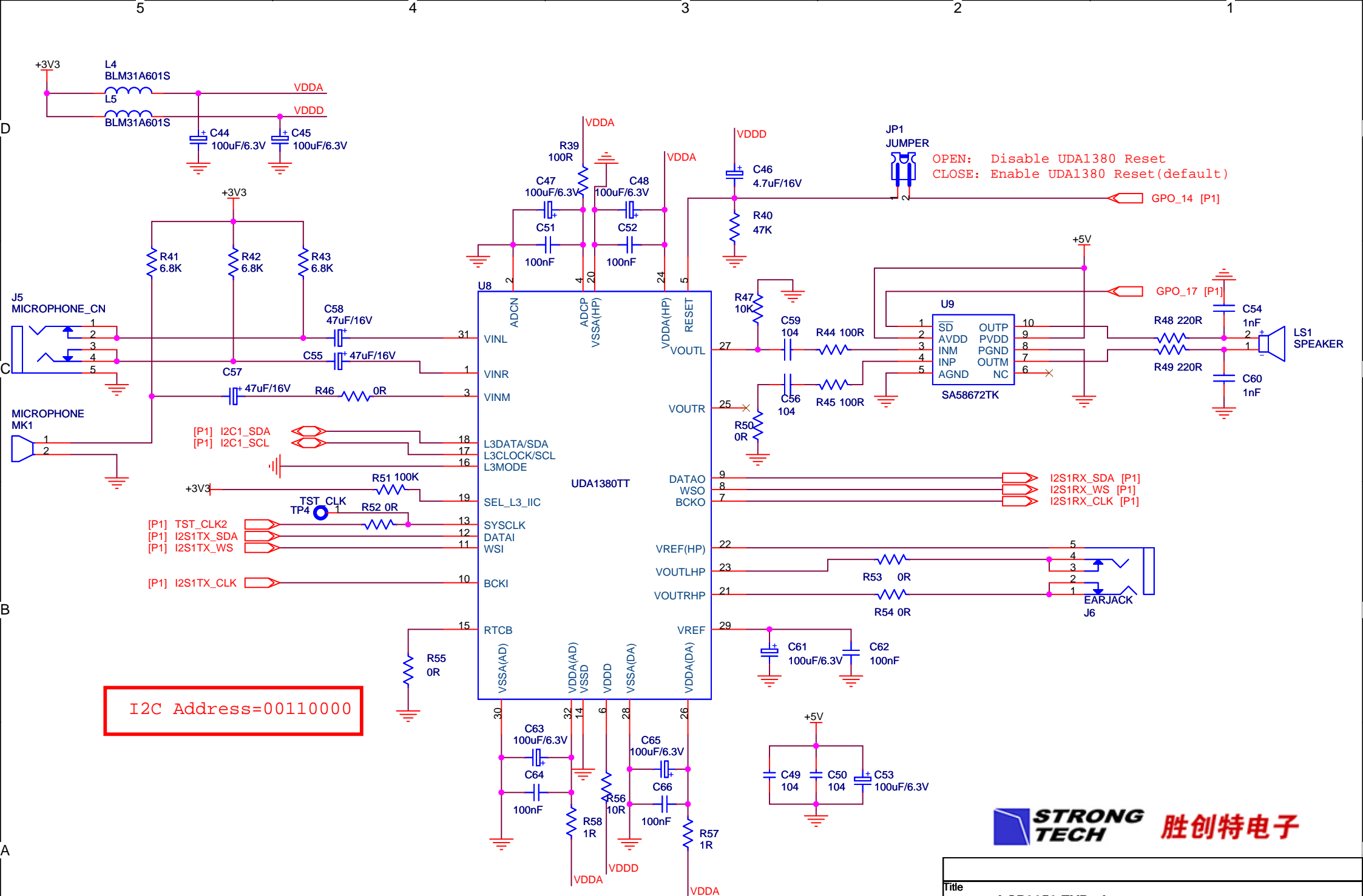
Mode 2	Mode 1	Mode 0		
Empty	Empty	Empty	111	All Capable [Default]
Empty	Empty	10k to GND	110	Power Down Mode
Empty	10k to GND	Empty	101	Repeater Mode
Empty	10k to GND	10k to GND	100	100Base-TX Half duplex Advertised
10k to GND	Empty	Empty	011	100Base-TX Full Duplex Auto Negotiate
10k to GND	Empty	10k to GND	010	100Base-TX Half Duplex Auto Negotiate
10k to GND	10k to GND	Empty	001	10Base-T Full Duplex Auto Negotiate
10k to GND	10k to GND	10k to GND	000	10Base-T Half Duplex Auto Negotiate



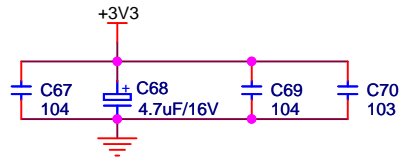
PHY Address (Default '11111' = 31d)

PHY Address	LED Output	Resistor configuration
LED1	LSB PHYAD0 = 1	Active Low Default
	LSB PHYAD0 = 0	Active High Populate 10k to GND on pin. Diode needs to be GND referenced
LED2	PHYAD1 = 1	Active Low Default
	PHYAD1 = 0	Active High Populate 10k to GND on pin. Diode needs to be GND referenced
LED3	PHYAD2 = 1	Active Low Default
	PHYAD2 = 0	Active High Populate 10k to GND on pin. Diode needs to be GND referenced
LED4	PHYAD3 = 1	Active Low Default
	PHYAD3 = 0	Active High Populate 10k to GND on pin. Diode needs to be GND referenced
	MSB PHYAD4 = 1	
	MSB PHYAD4 = 0	

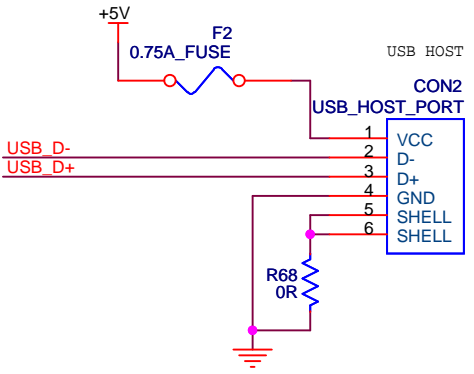
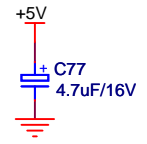
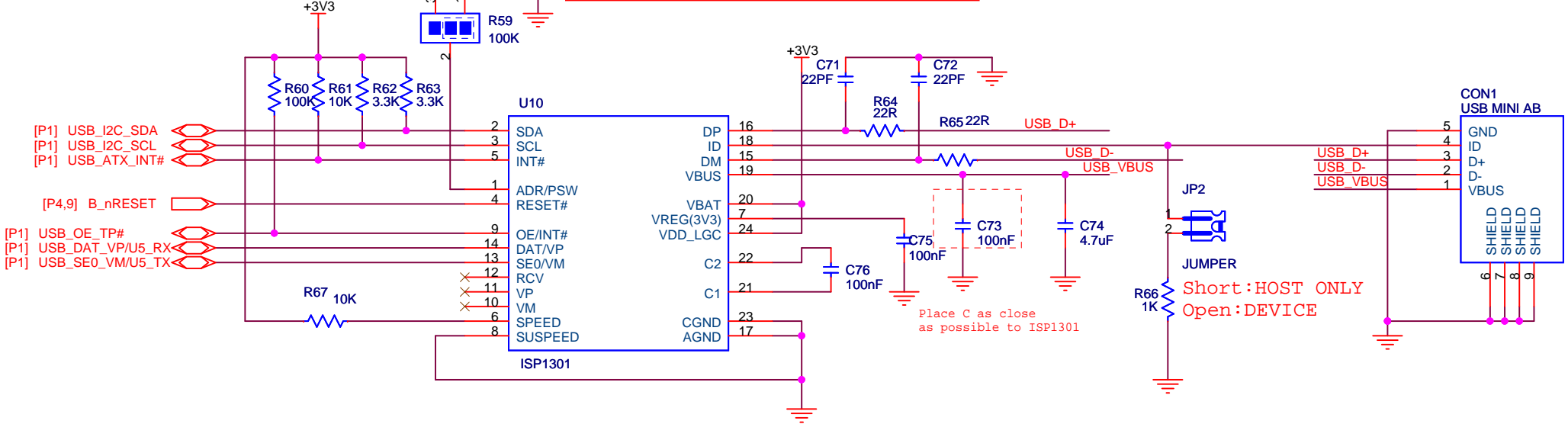




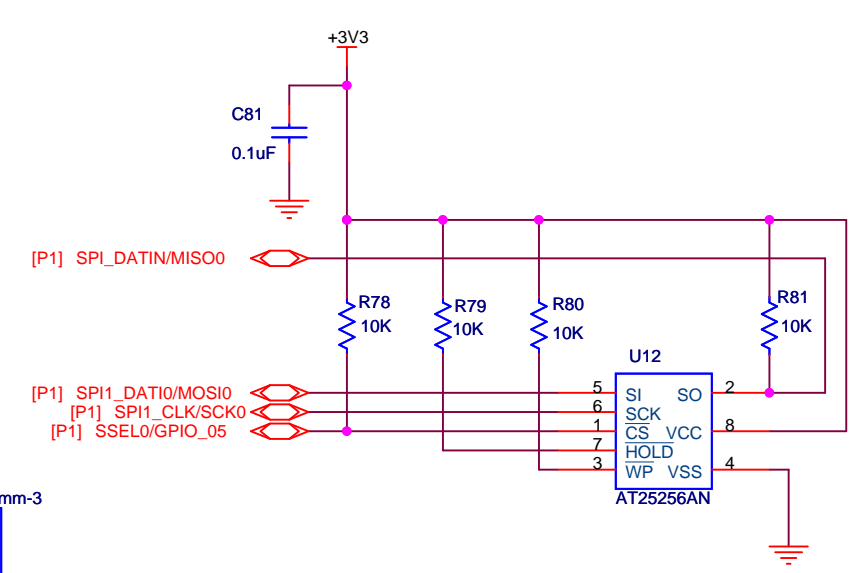
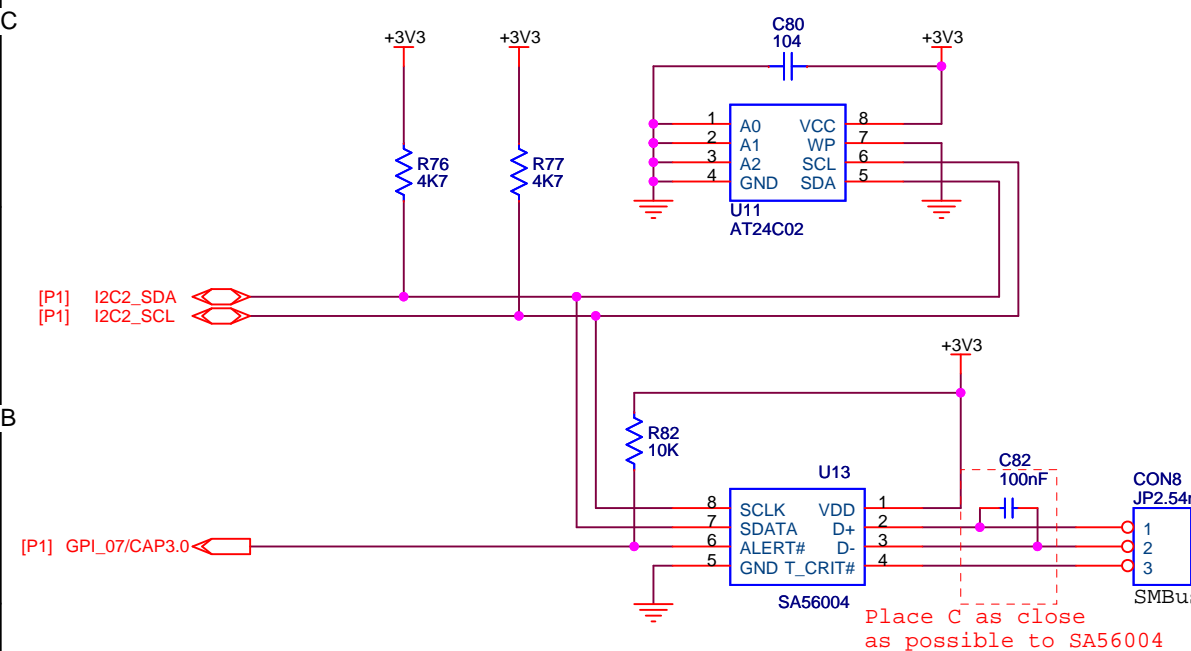
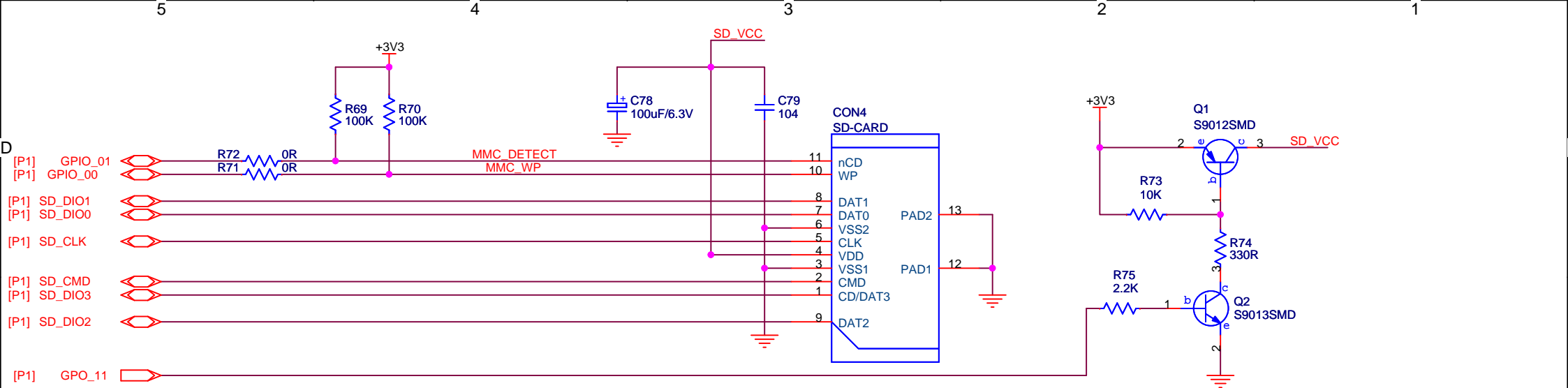
Title		
<LCP3250 EVB_dev>		
Size	Document Number	Rev
A4	<Doc>	<1.0>
Date:	Tuesday, April 27, 2010	Sheet 5 of 9



ADR=0 I2C Address is 0x2C
 ADR=1 I2C Address is 0x2D

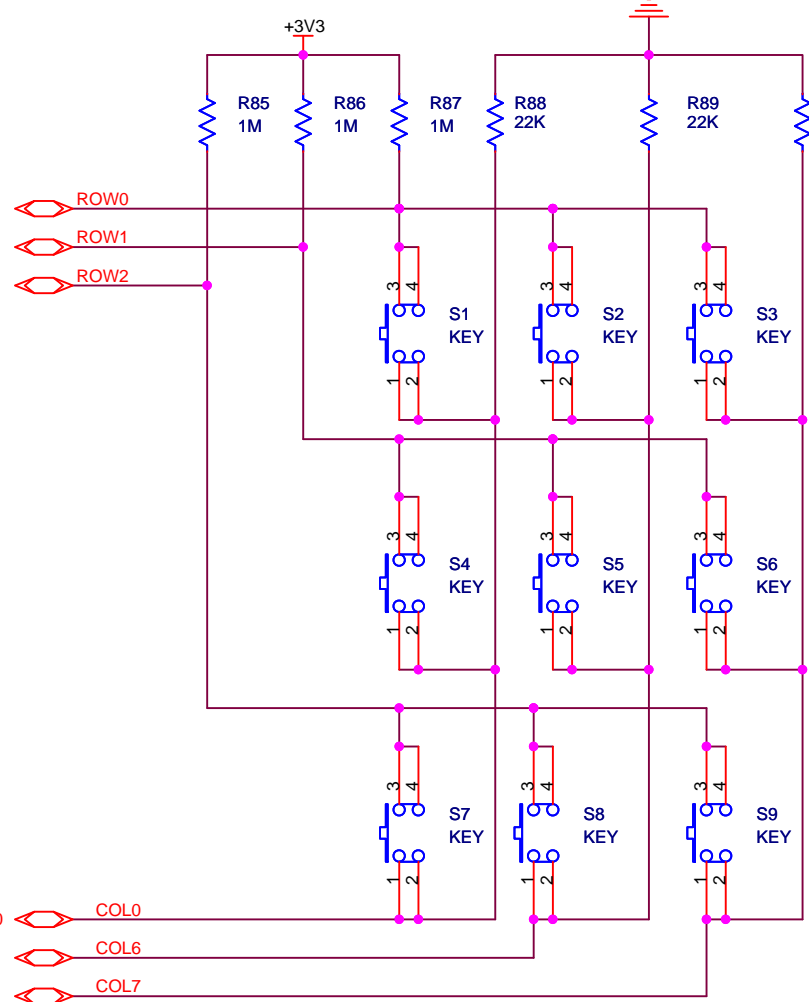


Title		
<LCP3250 EVB_dev>		
Size	Document Number	Rev
A4	<Doc>	<1.0>
Date:	Tuesday, April 27, 2010	Sheet 6 of 9

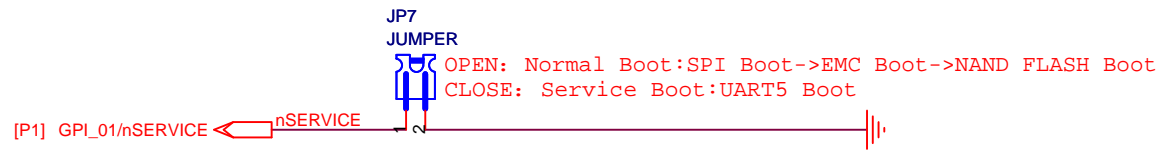
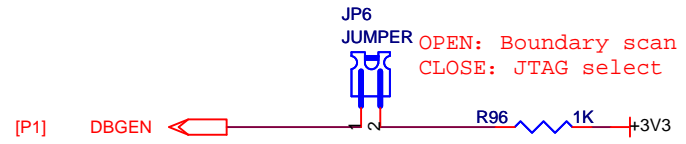
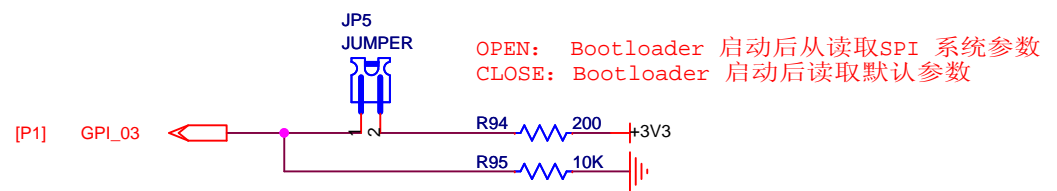
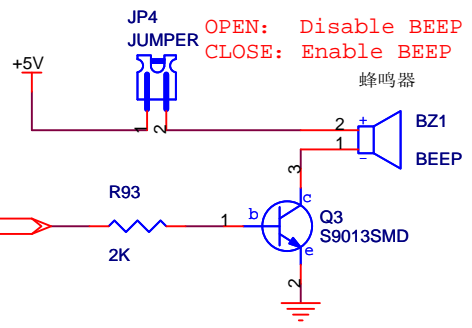
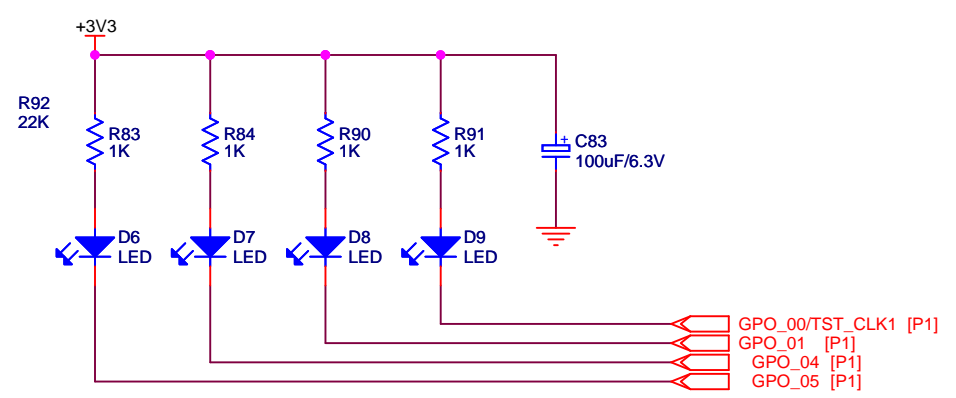
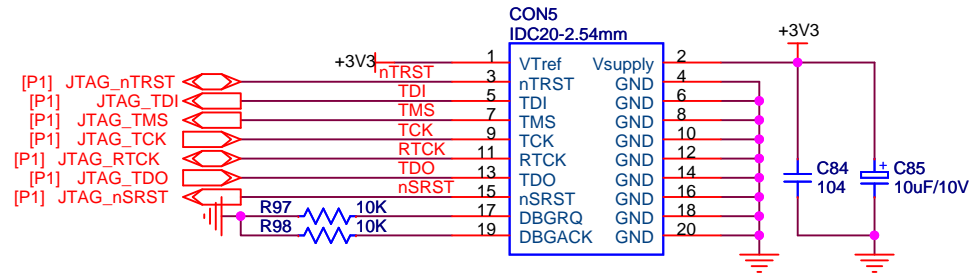
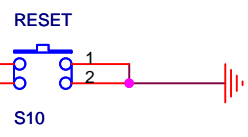


Title		
<LCP3250 EVB_dev>		
Size	Document Number	Rev
A4	<Doc>	<1.0>
Date:	Tuesday, April 27, 2010	Sheet 7 of 9

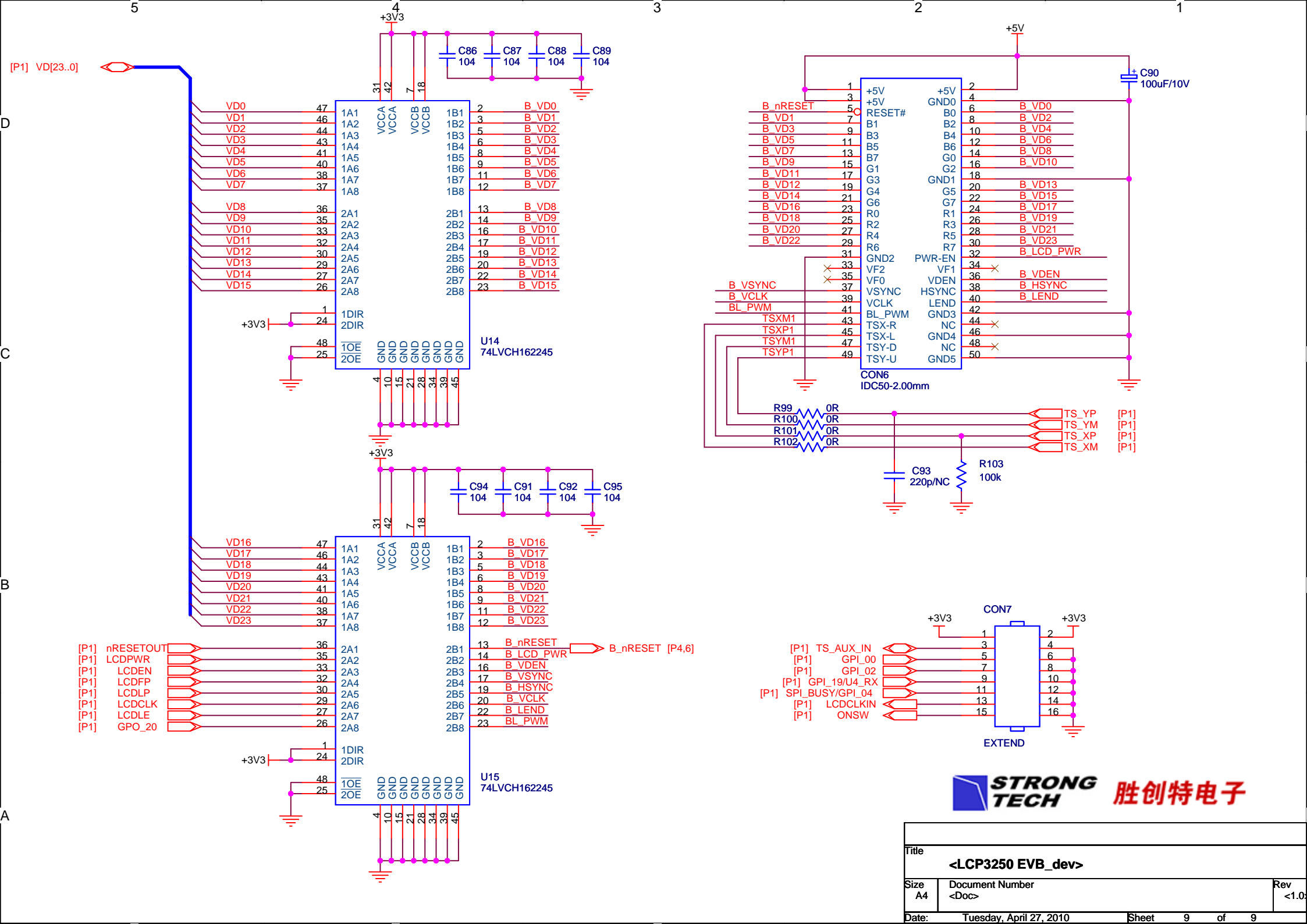
[P1] KEY_ROW0
[P1] KEY_ROW1
[P1] KEY_ROW2



[P1] KEY_COL0 COL0
[P1] KEY_COL6 COL6
[P1] KEY_COL7 COL7



Title <LCP3250 EVB_dev>		
Size A4	Document Number <Doc>	Rev <1.0>
Date: Tuesday, April 27, 2010	Sheet 8	of 9



Title		
<LCP3250 EVB_dev>		
Size	Document Number	Rev
A4	<Doc>	<1.0>
Date:	Tuesday, April 27, 2010	Sheet 9 of 9